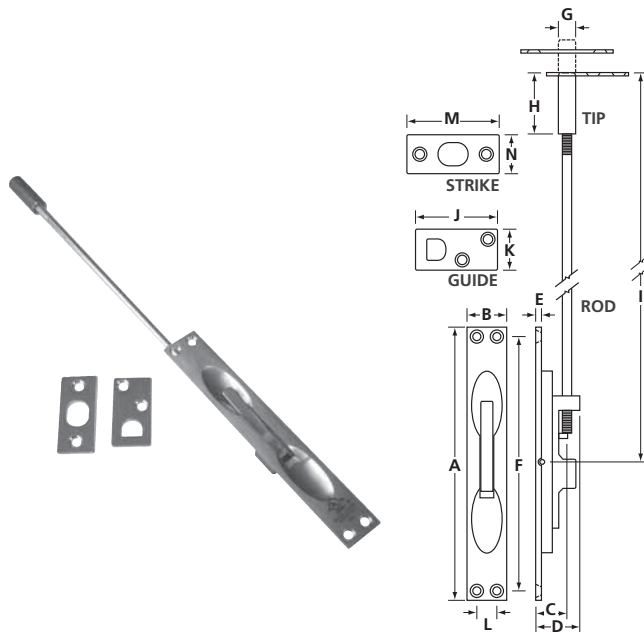


MANUAL EXTENSION FLUSH BOLT



- Brass-aluminum construction material
- Throw: 3/4" (19mm)
- Adjustable rod extension up to 7/8" (22.2mm)
- Supplied with guide, strike plate, 1/4-20 UNC threaded rod and mounting hardware
- Optional rods available: model #FBUL100R16 (nominal length "l" dimension 18" (457.2mm) model #FBUL100R22 (nominal length "l" dimension 24" (609.6mm)
- UL listed for use on hollow metal, metal clad, steel covered composite, flush type sheet or metal swinging type fire doors
- Fits metal door preparation per ANSI A115.4-1981
- Sold per pair
- Finish: polished brass (3) and satin chrome (26D)

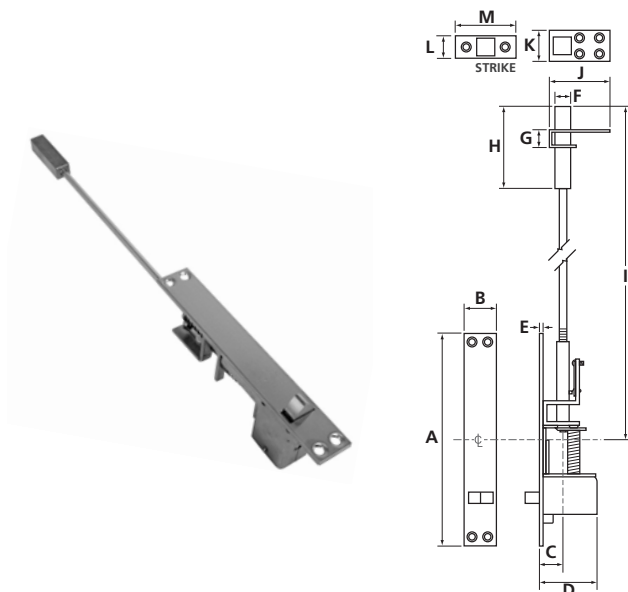
OPTIONAL RODS:

#FBUL100R16 - 16" (406mm)

#FBUL100R22 - 22" (559mm)

MODEL NUMBER	A	B	C BS	D	E	F	G SQ	H	I	J	K	L	M	N	QTY PER CASE	WEIGHT LBS / KG
FBUL100	6 3/4 (171)	1 (25.4)	3/4 (19.1)	1 (25.4)	1/8 (3.2)	6 1/4 (158.8)	1/2 (12.7)	1 1/2 (38)	12 (305)	2 (50.8)	1 (25.4)	1/2 (12.7)	2 1/4 (57.1)	15/16 (23.8)	2	1.45 / 0.66

AUTOMATIC EXTENSION FLUSH BOLT FOR HOLLOW METAL DOORS



- Steel construction, non handed
- Top and bottom flush bolt units for use on metal doors measuring up to 4 ft (1219mm) wide and 8 ft (2438mm) high
- cULus labeled and rated only for hollow metal doors up to and including 3 hrs. Conforms to UL 10C and UBC 7-2-1997
- Use hollow metal doors
- Fits standard and ANSI preparation for metal doors
- Fully automatic, when active door is opened, inactive door is free
- Maintains inactive door locked in case of fire
- Supplied with bolt guide, door strike and mounting hardware
- Finish: Satin stainless steel (32D)

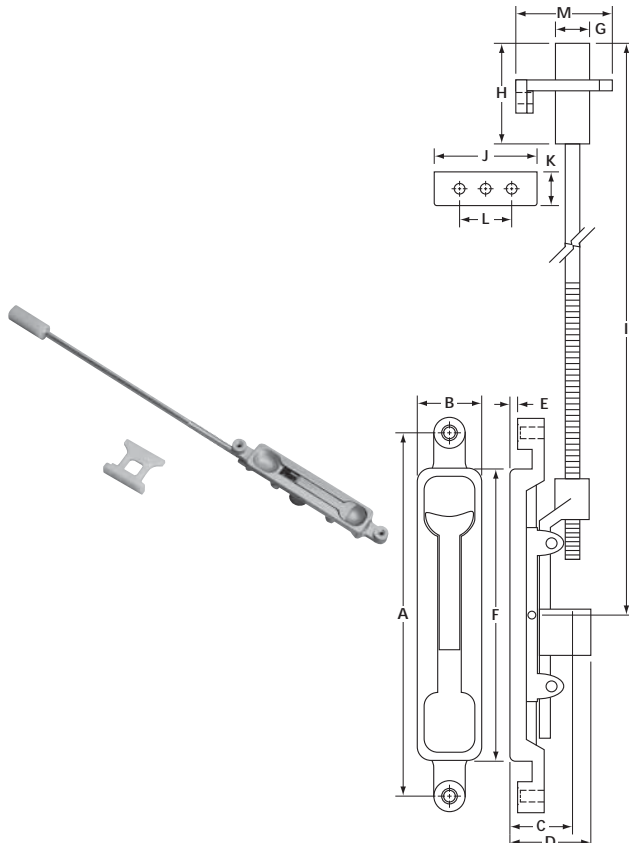
MODEL NUMBER	FINISH	A	B	C BS	D	E	F	G SQ	H	I	J	K	L	M	QTY PER BOX	WEIGHT LBS / KG
FB610M	32D	6 3/4 (171)	1 (25.4)	3/4 (19.1)	1 7/8 (47.6)	1/8 (3.2)	1/2 (12.7)	5/8 (15.9)	2 (51)	12 (305)	2 (50.8)	1 (25.4)	1 (25.4)	2 1/4 (57)	2	4.4 / 2.0

ORDERING EXAMPLE: **FBUL100** / **-26D**
SERIES / FINISH

3 – Polished brass 26D – Satin chrome 32D – Satin stainless steel

Dimensions unless specified otherwise are: Inches (Millimeters)

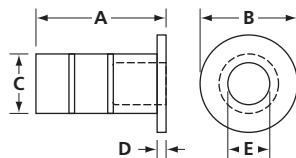
MANUAL EXTENSION FLUSH BOLT FOR COMMERCIAL ALUMINUM DOORS UL



- Die-cast zinc/steel construction material
- Throw: 5/8" (16mm)
- 1/4-20 UNC threaded extension rod
- Flush bolt faceplate with 5/32" (4mm) radius corners
- Mounting machine screws #8 included for aluminum door installation
- **Optional rods available:** #ERDC860 extension rod 12" (304.8mm) and #RRDC860 replacement rod 12" (304.8mm)
- **Optional guides available:** #DC860G and #DC860RG
- Sold individually
- Finish: aluminum (28) and duronodic (20D)

MODEL NUMBER	A	B	C BS	D	E	F	G SQ	H	I	J	K	L	M	QTY PER CASE	WEIGHT LBS / KG
DC860	5 1/4 (132.8)	15/16 (23.8)	13/16 (20.6)	1 1/8 (28.6)	1/8 (3.2)	4 1/4 (108)	1/2 (12.7)	1 1/2 (38)	12 (305)	1 1/2 (38)	1/2 (12.7)	3/4 (19.1)	1 3/8 (34.9)	10	5.3 / 2.4

DUST PROOF STRIKE



- Spring loaded plunger
- 3/4" (19mm) inside depth
- Finish: clear anodized aluminum (28)

MODEL NUMBER	MATERIAL	FINISH	A	B DIA	C DIA	D	E DIA	QTY PER BOX	WEIGHT LBS / KG
T840	Aluminum	28	1 7/8 (48)	1 7/16 (36)	7/8 (21)	1/8 (3.2)	9/16 (14)	30	2.26 / 1.03

ORDERING EXAMPLE: DC860 | -28
SERIES | FINISH