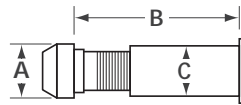
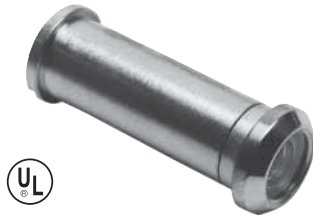


DOOR SECURITY HARDWARE

DOOR TRIM & ACCESSORIES

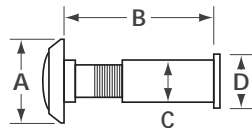
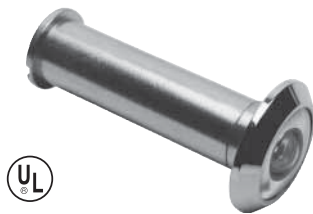
PARAMOUNT

DOOR VIEWERS



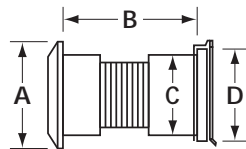
- Solid brass body with acrylic optical lens
- For 1 3/8" (35mm) to 2 1/4" (57mm) door thickness
- UL listed for up to 20 minutes
- Finish: polished brass (3) and satin chrome (26D)

MODEL NUMBER	VISION ANGLE	BORE	A DIA	B (DOOR THICKNESS)	C DIA	D DIA	QTY PER BOX	BOX WEIGHT LBS / KG
DV160	160°	1/2 (12.7)	5/8 (16)	1 3/8 to 2 1/4" (35 to 52)	15/32 (11.9)	37/64 (14.7)	24	0.9 / 0.42



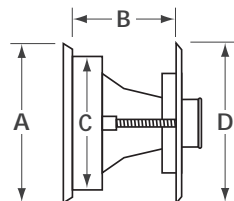
- Solid brass body with acrylic optical lens
- For 1 3/8" (35mm) to 2 1/4" (57mm) door thickness
- UL listed for up to 20 minutes
- Finish: polished brass (3) and satin chrome (26D)

MODEL NUMBER	VISION ANGLE	BORE	A DIA	B (DOOR THICKNESS)	C DIA	D DIA	QTY PER BOX	BOX WEIGHT LBS / KG
DV180	180°	5/8 (15.9)	1 1/32 (26.2)	1 3/8 to 2 1/4" (35 to 52)	9/16 (13.9)	11/16 (17.5)	12	0.7 / 0.34
DV200	200°	11/16 (17.5)	1 1/16 (29.9)		5/8 (16.1)	3/4 (19.1)		0.9 / 0.43



- Zinc die-cast body with polished optical glass lenses
- For 1 11/16" (43mm) to 2 1/8" (54mm) door thickness
- UL listed for up to 90 minutes on fire-rated wood doors
- Detachable lens cover
- Individually boxed
- Finish: polished chrome (CHR)

MODEL NUMBER	VISION ANGLE	BORE	A DIA	B (DOOR THICKNESS)	C DIA	D DIA	QTY PER BOX	BOX WEIGHT LBS / KG
DS300	180°	1 (25.4)	1 1/4 (31.8)	1 11/16 to 2 1/4 (43 to 57)	15/16 (24)	1 1/8 (28)	15	2.9 / 1.3



- Revolving door viewer
- Stamped brass components
- Crystal optical glass lenses
- For 1 3/4" (70 mm) door thickness
- Individually boxed
- Finish: satin chrome (26D)

MODEL NUMBER	VISION ANGLE	BORE	A DIA	B (DOOR THICKNESS)	C DIA	D DIA	QTY PER BOX	WEIGHT LBS / KG
511	140°	2 3/8 (60.3)	2 3/4 (70)	1 1/2 to 1 13/16 (38 to 46)	29/32 (60)	2 3/4 (70)	1	0.4 / 0.2

ORDERING EXAMPLE: **DV160** SERIES **-26D** FINISH

3 – Polished brass 26D – Satin chrome CHR – Polished chrome

Dimensions unless specified otherwise are: Inches (Millimeters)