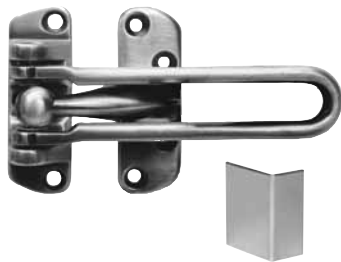
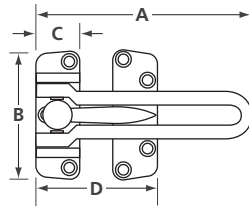


DOOR GUARD



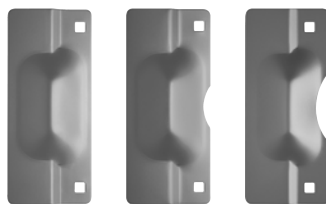
RH28EP



- High security zinc alloy door guard, supplied with mounting screws
- #RH28EP: Protective edge plate for door guard, 9/16" x 1" x 1 3/16" (14.3mm x 25.4mm 30mm) sold separately
- Finish: Satin chrome (26D)

MODEL NUMBER	FINISH	A	B	C	D	PER BOX	WEIGHT LBS / KG
RH28	26D	4 1/4 (108)	2 7/16 (62)	13/16 (21)	2 5/8 (67)	10	4.2 / 1.8

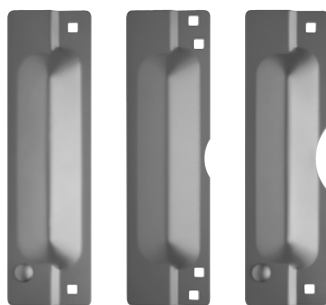
LATCH PROTECTORS



307

307S

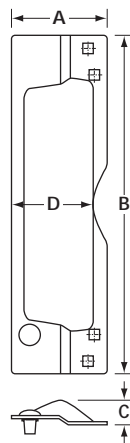
307L



311P

311S

311LP

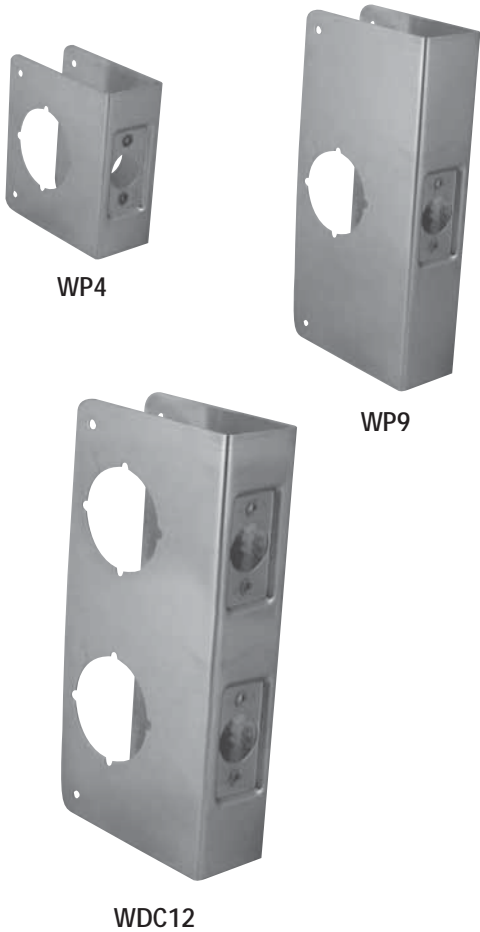


- Unit covers the latch area of the door, thereby providing added protection from burglaries, vandalism or abuse
- For use with maximum 2 1/2" (63.5 mm) diameter mortise or 3 5/8" (92.1 mm) cylindrical lock
- Made of heavy gauge steel
- 311P and 311LP are supplied with security pin to prevent separation of the door and frame
- Individually carded and supplied with carriage bolts and nuts
- Finish: aluminum (28)

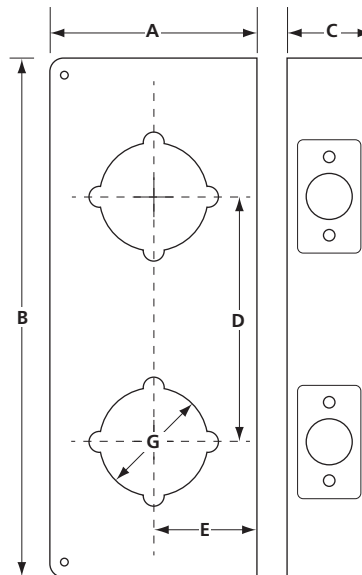
MODEL NUMBER	FINISH	A	B	C	D	PER CASE	WEIGHT LBS / KG
307	28	3 (76.3)	7 (177.7)	5/16 (7.7)	N/A	40	30.8 / 14.0
307S					2 3/4 (70.0)		
307L					2 9/16 (65.0)		
311P		3 3/32 (78.2)	10 7/8 (276.5)		N/A		50.1 / 23.1
311S					2 7/8 (73.0)		
311LP					2 5/8 (67.0)		

ORDERING EXAMPLE: 01003 | -26D
 SERIES | FINISH

WRAP AROUND PLATES



- Stainless steel wrap-around plates
- Finish: Polished brass (3), Satin stainless steel (32D)



MODEL NUMBER	MATERIAL	FINISH	A	B	C	D	E	G DIA	UNIT WEIGHT LBS / KG	
WP4BA	Stainless Steel or Brass	3, 32D	4 (102)	4 1/2 (114.5)	1 3/4 (45)	N/A	2 3/8 (60)	2 1/8 (54)	0.31 / 0.13	
WP4BB			4 1/4 (108)				2 3/4 (70)		0.33 / 0.15	
WP9BA			4 (102)	9 (229)			2 3/8 (60)		0.70 / 0.32	
WP9BB			4 1/4 (108)				2 3/4 (70)		0.75 / 0.34	
WDC12BA			4 (102)	12 (305)			5 1/2 (140)		2 3/8 (60)	0.42 / 0.42
WDC12BB			4 1/4 (108)						2 3/4 (70)	1.00 / 0.46

ORDERING EXAMPLE: WP4BB | -32D
SERIES FINISH