

# PARAMOUNT

---

## 1700 SERIES

### POWER ADJUSTABLE DOOR CLOSERS

- Non-handed
  - Adjustable power range 2 to 5
  - Optional barrier free model adjustable power range 1 to 4
  - Factory preset to size 3
  - Power adjustable arm bracket
  - Maximum 180° opening angle
  - Tri-pack for regular, parallel arm and top jamb installation
  - Precision cast aluminum alloy housing
  - Rack and pinion mechanism
  - Non-critical thermostatic valves
  - High quality non-gumming and non-freezing hydraulic fluid
  - Narrow profile plastic cover included
  - Separate adjustable sweep and latching speed valves
  - Adjustable backcheck control from 70° to 85°
  - Finishes: metallic aluminum or dark bronze
  - UL listed
  - 5 year limited warranty
- 



---

The 1700 series multi power closer offers exceptional door control for moderate traffic applications. This all-in-one closer provides door installers with maximum flexibility on site.

---

# 1700 SERIES DOOR CLOSERS

## SPECIFICATION

Closers for interior and exterior doors shall be 1700 series. Closer shall be multi-size with spring power adjustment from sizes 2 to 5. Closer shall be surface mounted, full-cycle hydraulic rack and pinion type with cast aluminum alloy body. Closer shall be supplied with a non-handed narrow profile plastic cover. Closer shall project no more than 2 7/8" (73.0mm) from the mounting surface. Closer shall have two non-critical thermostatic valves to separately control sweep and latch speeds. Hydraulic fluid shall be non-gumming and non-freezing. Closer shall have an independent valve to control the adjustable-cushioning backcheck. Brackets shall be supplied to permit regular, top jamb or parallel arm installation and standard arm bracket shall allow 15% power adjustment. Closer shall be supplied with all necessary mounting fasteners.

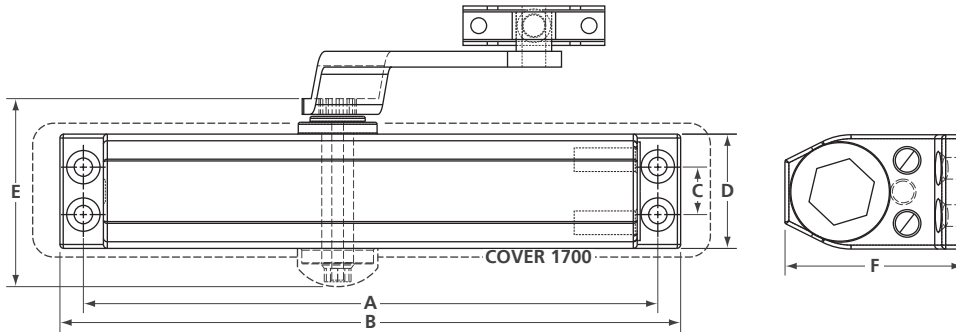
**OPTIONAL:** All 1700BF series door closers shall be multi-sized with spring adjustment from sizes 1 to 4.

## SELECTION GUIDE

CLOSER MULTI-SIZE	MAX DOOR WIDTH		MAX DOOR WEIGHT LBS / KG	BACKCHECK	HOLD OPEN	DELAYED ACTION	BARRIER FREE	COVER	FINISH	QTY PER CASE	WEIGHT LBS / KG
	INTERIOR	EXTERIOR									
1700BC 2 - 5	52 (1321)	48 (1220)	220 / 100	YES	N/A	N/A	N/A	YES	AL, DU	10	66.0 / 30.0
	48 (1220)	42 (1067)					YES				

**ORDERING EXAMPLE:** 1700 | BC | AL  
SERIES | OPTION | FINISH

## SIZE CHART



DIMENSION	1700
A	9 1/16 (230.0)
B	9 3/4 (248.0)
C	3/4 (19.0)
D	1 3/4 (45.0)
E	3 1/4 (83.0)
F	2 7/8 (73.0)
COVER	10 9/16 L x 2 1/16 H (269.0 x 53.0)

## PARTS & ACCESSORIES

SNB1420 Sex nut bolt – for 1 3/4" (44.5mm) door thickness  
 (Through bolt machine screw)

SNB1420

