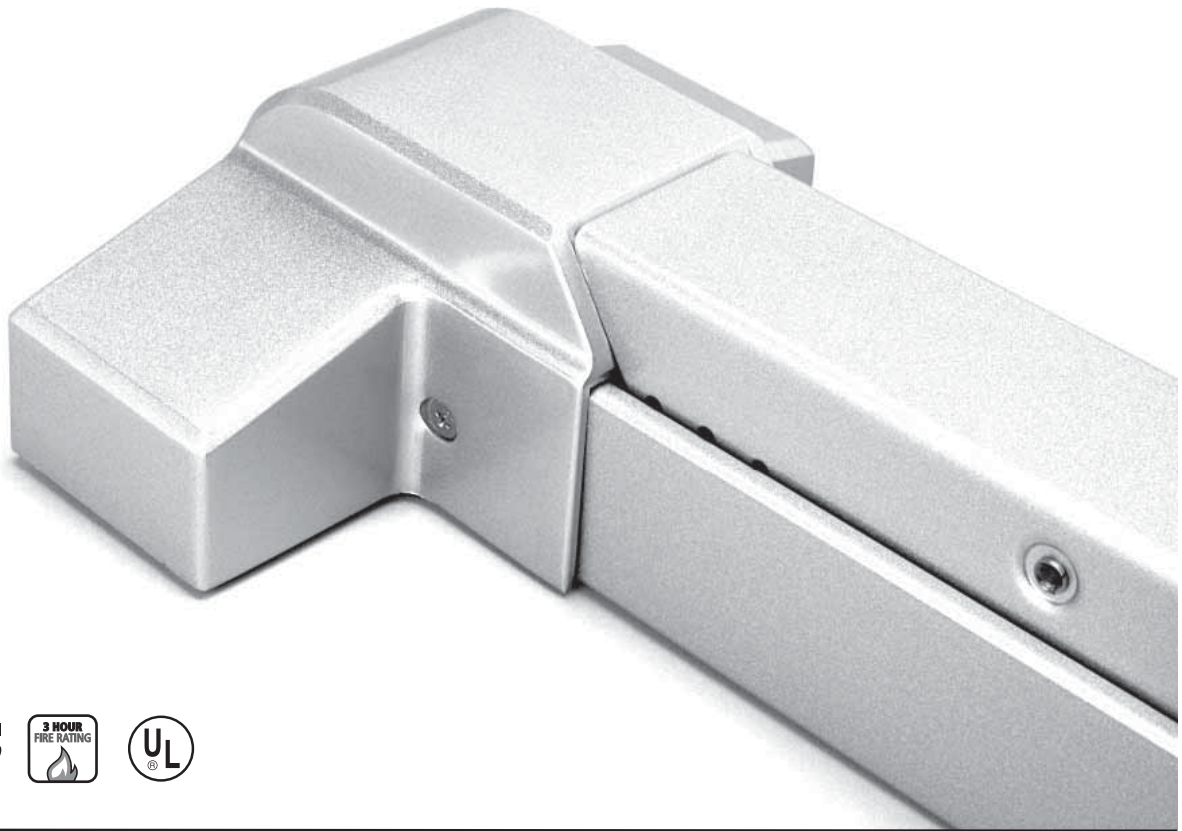


PARAMOUNT

6500 SERIES TOUCH PAD EXIT DEVICES

- Non-handed rim surface mounted type & handed surface vertical rod mounting type
- Less bottom rod option available
- Field reversible
- Sizable for door widths 30" (762mm) to 36" (914mm) and 36" (914mm) to 48" (1219mm)
- Optional exterior trims available
- Made from heavy gauge steel
- Stainless steel latch bolt
- Finish: painted metallic aluminum or stainless steel
- Dogging by hex key on non-fire labelled device
- Conforms to ANSI A156.3, Grade 2
- UL listed for Panic Hardware
- UL listed for 3 hour Fire Exit Hardware
- 1 year limited warranty



CONFORMS TO ANSI
GRADE 2



The 6500 series touch pad exit device offers a streamlined design and is available with a variety of exterior trim options. This exit device is ideal for moderate use wood or hollow metal door applications.

6500 SERIES EXIT DEVICES

SPECIFICATION

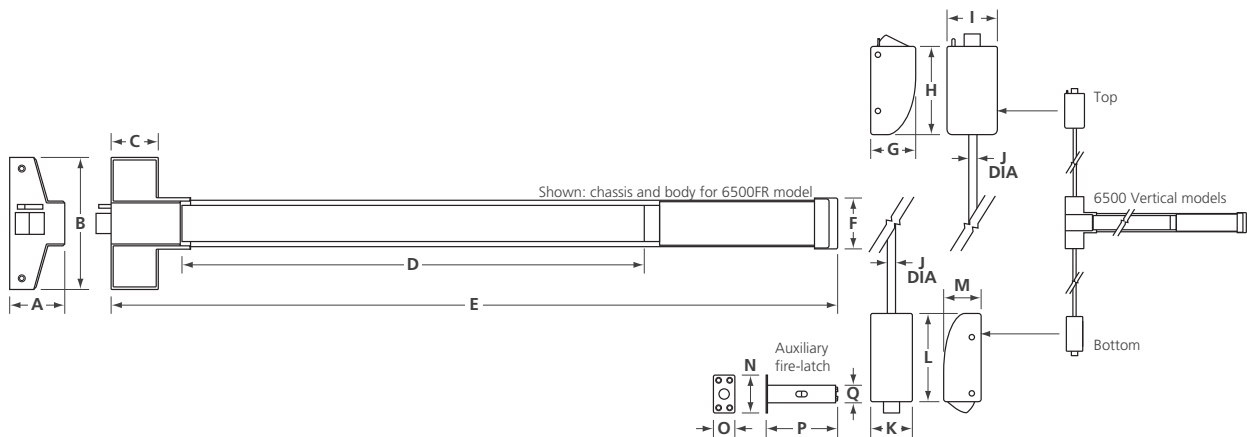
Exit devices for interior and exterior doors shall be 6500 series made from heavy gauge steel and shall meet the requirements of ANSI A156.3, Grade 2. The touch pad exit device shall permit easy installation on either wood or hollow metal doors with moderate traffic and shall project no more than 2 1/2" (64mm) from the door surface. The rim mounted exit device shall be non-handed and field sizeable, while the vertical mounted exit device shall be handed, but field reversible and field sizeable. On non-fire labelled doors, dogging of the exit device shall be permitted with the use of a hex key. The exit device shall be supplied with stainless steel latch bolt and all the necessary mounting fasteners. **OPTIONAL:** All 6500 series exit devices shall have exterior trim options using 9500 series trims; 9500TL, 9500TK and 9500TT. The 6500FV & 6500PV model exit devices shall have top and bottom surface mounted vertical rods. The 6500FL model exit devices shall have a top surface mounted vertical rod and an auxiliary fire latch.

SELECTION GUIDE

MODEL NUMBER	TYPE	DESCRIPTION	DOOR WIDTH	FINISH	QTY PER CASE	WEIGHT LBS / KG
6500PR3	"Panic Hardware" labelled models with touch bar dogging	Rim exit device, non-handed	30 to 36 (762 to 914)	20D, 28, 32D	4	38.2 / 17.3
6500PR4			36 to 48 (914 to 1219)	28, 32D		44.8 / 19.9
6500PV37		Surface vertical rod exit device, handed	30 to 36 (762 to 914)	20D, 28, 32D		49.4 / 22.4
6500PV48			36 to 48 (914 to 1219)	28		54.0 / 24.5
6500FR3	"Fire Exit Hardware" labelled models, 3 hour rating, non-dogging	Rim exit device, non-handed	30 to 36 (762 to 914)	28, 32D		40.0 / 18.1
6500FR4			36 to 48 (914 to 1219)			46.8 / 21.2
6500FV37		Surface vertical rod exit device, handed	30 to 36 (762 to 914)			57.6 / 26.1
6500FV48			36 to 48 (914 to 1219)			64.2 / 29.1
6500FL37		Surface top vertical rod exit device with thermal pin auxiliary fire latch, handed	30 to 36 (762 to 914)			49.8 / 22.6
6500FL48			36 to 48 (914 to 1219)			53.0 / 24.0

ORDERING EXAMPLE: 6500 | FV | 3 | 7 | RHR | -32D
SERIES | TYPE | DOOR WIDTH | DOOR HEIGHT | HAND | FINISH

SIZE CHART



MODEL	A	B	C	D	E		F	G	H	I	J DIA	K	L	M	N	O	P	Q DIA
					door width 3	door width 4												
6500R						45 1/16 (1144.6)		N/A	N/A	N/A	N/A	N/A	N/A	N/A	N/A	N/A	N/A	N/A
6500V	2 1/2 (63.8)	6 1/16 (154.0)	2 3/16 (55.3)	21 1/8 (536.6)	33 (838.2)		2 5/16 (58.9)	2 1/16 (52.4)	3 31/32 (100.7)	2 5/8 (66.9)	1/2 (12.8)	2 1/8 (54.0)	3 31/32 (100.6)	1 21/32 (42.2)	N/A	N/A	N/A	N/A
6500FL						N/A						N/A	N/A	N/A	1 3/4 (44.5)	1 (24.9)	3 1/4 (82.45)	13/16 (20.4)

DIA – Diameter N/A – Not applicable

Dimensions unless specified otherwise are: Inches (Millimeters)

6500 SERIES TRIMS & ACCESSORIES

TRIM STYLES



6500TPDT



6500TPEP



6500TPNL

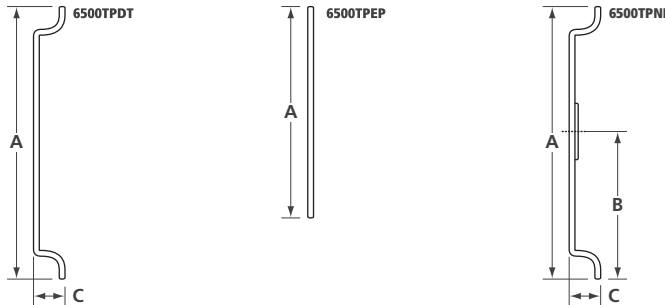
* All 6500 series exit devices can use exterior trim options from 9500 series : 9500TL, 9500TK and 9500TT (See 9500 Series)

SELECTION GUIDE

MODEL NUMBER	FUNCTION	DESCRIPTION	FINISH	QTY PER CASE	WEIGHT LBS / KG
6500TPDT	Function #2	Pull trim	28	20	11.2 / 5.1
6500TPEP	Function #1	Blank trim plate		100	29.9 / 13.6
6500TPNL	Function #4	Pull trim with solid brass 6-pin rim cylinder Schlage "C" keyway		20	19.8 / 9.0

TRIM ORDERING EXAMPLE: **6500** SERIES | **TP** TYPE | **DT** FUNCTION | **-28** FINISH

SIZE CHART



MODEL	A	B	C	D*
6500TPDT	7 13/16 (198)	N/A	1 1/4 (32)	3 (76)
6500TPEP	5 11/16 (144)		N/A	
6500TPNL	7 13/16 (198)	4 1/8 (105)	1 1/4 (32)	

* dimension width "D" (not shown)

ACCESSORIES

6500KA36 Alarm kit for size 3 model exit devices
 6500KA48 Alarm kit for size 4 model exit devices

6500AS255 Strike for fire rim exit device
 6500AS251 Double door overlapping strike for panic rim exit device (not for use on fire doors)

6500KA36



6500AS255



6500AS251



20D – Duronodic 28 – Aluminum 32D – Satin stainless steel
 N/A – Not applicable

Dimensions unless specified otherwise are: Inches (Millimeters)