

6500PR/FR SERIES

RIM EXIT DEVICE



- Certifications**
- Conforms to ANSI/BHMA A156.3, Grade 2
 - UL listed, Panic Exit
 - UL listed, up to 3hr Fire Exit
 - 1 Year limited warranty

- Rail Assembly**
- Stainless steel or steel rail assembly
 - Field sizable

- Handing**
- Non handed

- Door Width**
- 30–36" (762–914 mm)
 - 36–48" (914–1219 mm) – option

- Door Thickness**
- 1 3/4" (45 mm)

- Stile Width**
- 4 1/2" (114 mm) minimum
- Measured from door edge*

- Projection**
- 2 1/2" (64 mm) from door surface

- Latchbolt**
- Stainless steel, deadlocking

- Strike**
- 6500PR: Steel, standard type
 - 6500FR: Steel, standard type #6500AS255
- Other strikes available*

- Dogging**
- For Panic Exit models only
 - Hex key dogging

- Hardware**
- Machine and wood screws
 - Sex nut & thru-bolts¹ – available
- (1) Included with 6500FR. Required for non-reinforced hollow metal doors.*

- Electrical**
- Alarm kit – available
- Options** *Sold separately, see 6500 Trims & Accessories*

- Trims**
- Compatible with DOREX 9500TK/TL and 9500TT exterior trims – sold separately
 - See DOREX 9500 Trims & Accessories
 - Pull trims available – sold separately
 - See 6500 Trims & Accessories

- Finish**
- 20D–Dark bronze; 28–Aluminum, painted; 32D–Satin stainless steel
- Other finishes available by special order*

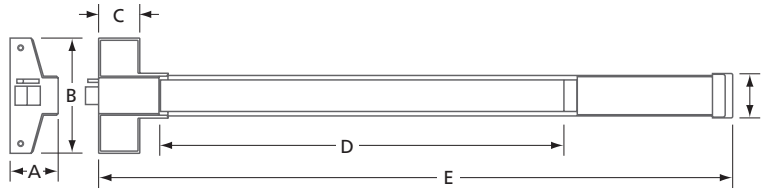
6500PR	3	–	28
MODEL ¹	SIZE ¹		FINISH

(1) SEE SELECTION GUIDE

SELECTION GUIDE

MODEL		SIZE	DOOR SIZE ¹	DOGGING	FINISH	/ CASE
6500PR	Panic Hardware Rim Exit Device	3	30-36x84 (762-914x2134)	●	20D, 28, 32D	4
		4	36-48x96 (914-1219x2438)	●	28, 32D	4
6500FR	Fire Hardware ² Rim Exit Device	3	30-36x84 (762-914x2134)	—	28, 32D	4
		4	36-48x96 (914-1219x2438)	—	28, 32D	4

(1) RECOMMENDED DOOR SIZE (IN-MM), FOR NON-STANDARD SIZES OR INSTALLATIONS PLEASE CONTACT. (2) FIRE EXIT HARDWARE MUST BE INSTALLED ON FIRE EXIT LABELLED DOORS.



MODEL	A	B	C	D	E ¹	F
6500PR3 / FR3	2 1/2 (64)	6 1/16 (154)	2 3/16 (55)	21 1/8 (537)	33 (838)	2 5/16 (59)
6500PR4 / FR4					45 1/16 (1145)	

IN (MM) (1) CAN BE CUT TO SIZE - SEE PRODUCT INSTALLATION INSTRUCTIONS

PARTS & COMPONENTS

See 6500 Trims & Accessories for additional items.



6500AS255
Strike for fire rim exit device or top strike for fire vertical device. Includes shim, wood and machine screws.



6500AS251
Overlapping strike for double doors and paired panic exit devices only. Requires door coordinator (sold separately).

6500PV/FV/FL SERIES

SURFACE VERTICAL ROD EXIT DEVICE



- Certifications**
- Conforms to ANSI/BHMA A156.3, Grade 2
 - UL listed, Panic Exit
 - UL listed, up to 3hr Fire Exit
 - 1 Year limited warranty

- Chassis**
- Stainless steel or steel rail assembly
 - Field sizable

- Handing**
- Handed

- Door Width**
- 30–36x84" (762–914x2134mm)
 - 36–48x84" (914–1219x2134mm) – option

- Door Thickness**
- 1¾" (45mm)

- Stile Width**
- 4½" (114mm) minimum
- Measured from door edge*

- Projection**
- 2½" (64mm) from door surface

- Vertical Rods**
- for 84" (2134mm) tall doors

- Latchbolt**
- Top: stainless steel, deadlocking
 - Bottom: stainless steel

- Strike**
- 6500PV : steel, standard type
 - 6500FV/FL Top: steel, standard type #6500AS255
 - 9600FV Bottom: steel, standard type #6500AS255

- Dogging**
- For Panic Exit models only
 - Hex key dogging

- Hardware**
- Machine and wood screws
 - Sex nut & thru-bolts¹ – available
- (1) Included with 6500FV. Required for non-reinforced hollow metal doors.*

- Electrical**
- Alarm kit – available

- Options**
- Sold separately, see 6500 Trims & Accessories*

- Trims**
- Compatible with DOREX 9500TK/TL and 9500TT exterior trims – sold separately
 - See DOREX 9500 Trims & Accessories*
 - Pull trims available – sold separately
 - See 6500 Trims & Accessories*

- Finish**
- 20D–Dark bronze; 28–Aluminum, painted;
32D–Satin stainless steel
- Other finishes available by special order*

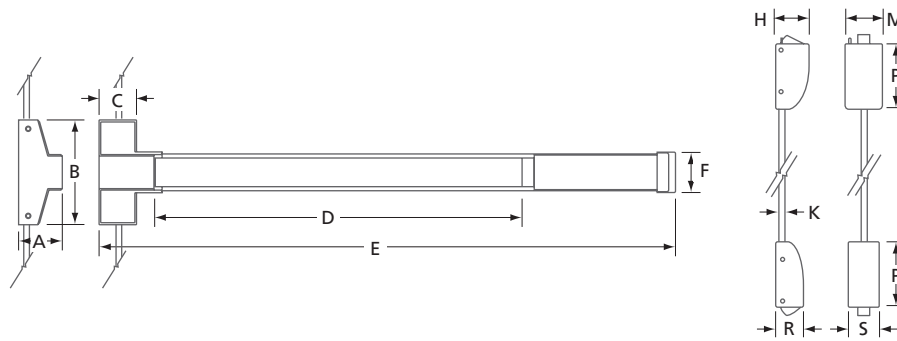
6500PV	37	LHR	–	28
MODEL ¹	SIZE ¹	HAND ²		FINISH

(1) SEE SELECTION GUIDE (2) LHR–LEFT HAND REVERSED, RHR – RIGHT HAND REVERSED

SELECTION GUIDE

MODEL		SIZE	DOOR SIZE ¹	DOGGING	FINISH	/ CASE
9500PV	Panic Exit Hardware Surface Vertical Rod	37	30-36x84 (762-914x2134)	●	20D, 28, 32D	4
		48	36-48x96 (914-1219x2438)	●	28, 32D	4
9500FV	Fire Exit Hardware ² Surface Vertical Rod	37	30-36x84 (762-914x2134)	—	28, 32D	4
		48	36-48x96 (914-1219x2438)	—	28	4
9500FL	Fire Exit Hardware ² Less Bottom Rod	37	30-36x84 (762-914x2134)	—	28	4

(1) RECOMMENDED DOOR SIZE (IN-MM), FOR NON-STANDARD SIZES OR INSTALLATIONS PLEASE CONTACT. (2) FIRE EXIT HARDWARE MUST BE INSTALLED ON FIRE EXIT LABELLED DOORS.



MODEL	A	B	C	D	E ²	F	H	K	M	P	R	S
6500PV/FV/FL ¹ 37	2 1/2 (64)	6 1/16 (154)	2 3/16 (55)	21 1/8 (537)	33 (838) 45 1/16 (1145)	2 5/16 (59)	2 1/16 (52.4)	∅12.7 (1/2)	2 5/8 (67)	3 15/16 (100)	1 21/32 (42)	2 1/8 (54)
6500PV/FV 48												

IN(MM) (1) FL MODEL DOES NOT INCLUDE BOTTOM ROD AND LATCH (2) CAN BE CUT TO SIZE - SEE PRODUCT INSTALLATION INSTRUCTIONS

PARTS & COMPONENTS

See 6500 Trims & Accessories for additional items.



6500AS255
Strike for fire rim exit device or top strike for fire vertical device. Includes shim, wood and machine screws.

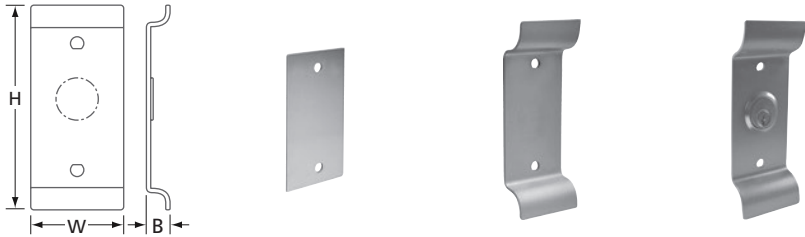


6500AS251
Overlapping strike for double doors and paired panic exit devices only. Requires door coordinator (sold separately).

6500 SERIES

TRIMS & ACCESSORIES

PULLS & PLATES



Trim	6500TPEP	6500TPDT	6500TPNL
Finish	28	28	28
Function	Blank plate (#1)	Dummy pull (#2)	Night latch (#4)
Cylinder	—	—	Rim Mortise ¹
Projection (B)	—	1¼ (32)	1¼ (32)
Plate (HxW)	5 ¹ / ₁₆ x3 (144x76)	7 ¹³ / ₁₆ x3 (198x76)	7 ¹³ / ₁₆ x3 (198x76)
Warranty	1 Year limited	1 Year limited	1 Year limited

IN (MM) (1) INCLUDES SOLID BRASS, 6-PIN CYLINDER, SCHLAGE C

OTHER ACCESSORIES



6500KA36
Alarm kit for 6500 size 3 exit device.

