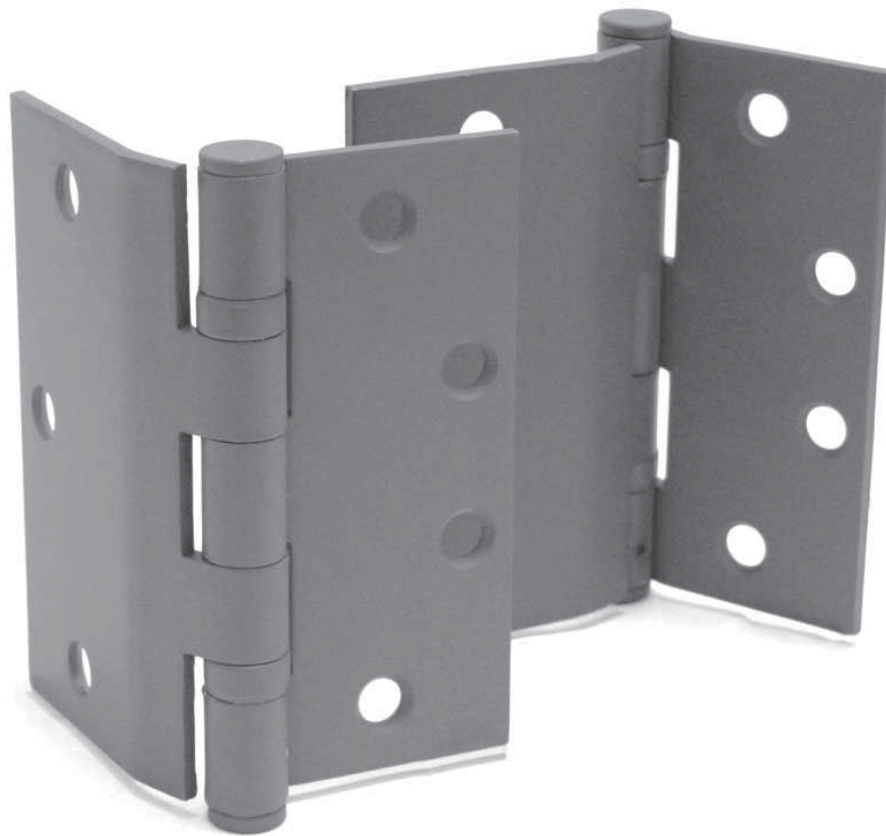


PARAMOUNT

BB1073 / BB1012 SERIES

HALF SURFACE TEMPLATE BUTT HINGES

- Handed
 - Base material: steel for series BB1073, stainless steel for series BB1012
 - Standard non-rising non-removable pin (NRP)
 - Standard flat top and knock-out bottom tips
 - BB1073 and BB1012 installation consists of one leaf mortised in door jamb, the other thru-bolted to surface of door
 - Quality wood screws / thru bolts & grommets and undercut machine screws included
 - Standard template hole pattern on mortised leaf template conforms to ANSI standard A156.7
-



BB1073 & BB1012 series hinges are half surface ball bearing template hinges. Made from the highest quality materials. These hinges are suitable for moderate to high traffic door applications and are recognized for value while delivering lasting performance.

BB1073 / BB 1012 SERIES HINGES

SPECIFICATION

All half surface ball bearing template hinges shall be BB1073 / BB1012 series. BB1073 series hinges shall be made from select quality steel base material. BB1012 series hinges shall be made from type 304 stainless steel. Hinges shall be of standard weight, have 5 knuckles, 2 Slimline ball bearings with non-rising non-removable pin (NRP) security and standard flat top and knock-out bottom tips. Hinges are handed and shall have four square corners. Hinges shall be supplied with all necessary wood and undercut machine mounting fasteners, plus thru-bolts with grommet-nuts.

SELECTION GUIDE

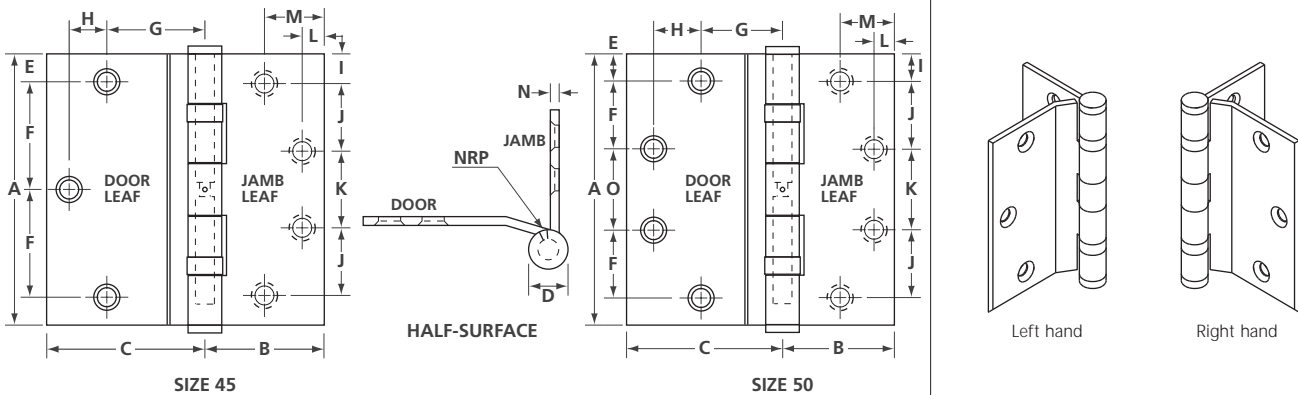
MODEL NUMBER	HANDING	SIZE	FINISH	MACHINE SCREWS	QTY PER BOX / CASE	CASE LBS / KG
BB1073L-45	Left hand	4 1/2 (114.3)	P	#12-24 x 1/2 (12.7)	3 / 48	57.8 / 26.2
BB1073R-45	Right hand					
BB1012L-45*	Left hand		32D			
BB1012R-45*	Right hand	5 (127)	P	1/4 - 20 x 2 (50.8) with grommet	3 / 48	68.2 / 31.0
BB1073L-50	Left hand					
BB1073R-50	Right hand					
BB1012L-50*	Left hand		32D			
BB1012R-50*	Right hand					

ANSI equivalence for reference only: steel - A8412, stainless steel - 5412

ORDERING EXAMPLE: **BB1012** | **L** | **45** | **-32D** | **-NRP**
SERIES | HAND | SIZE | FINISH | FEATURE

SIZE CHART

Left hand shown



SIZE	A	B	C	D	E	F	G	H	I	J	K	L	M	N	O
45	4 1/2 (114.3)	2 1/16 (52.4)	2 9/16 (65.0)	39/64 (15.5)	1/2 (12.7)	1 3/4 (44.6)	1 1/2 (38.1)	9/16 (14.3)	1/2 (12.7)	1 1/8 (28.6)	1 7/32 (31.3)	3/8 (9.5)	1 (25.4)	0.134 (3.4)	N/A
50	5 (127)		2 7/8 (73.0)	5/8 (15.8)		1 1/4 (31.8)		7/8 (22.2)		1 1/4 (31.8)	1 31/64 (37.7)			0.146 (3.7)	1 1/2 (38.1)