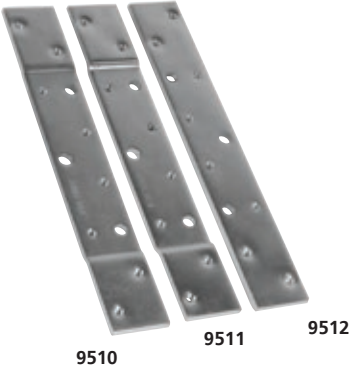


PRO SERIES

REINFORCEMENT & FILLER PLATES



- Steel reinforcement plate
- ANSI/BHMA A156.7 template hole pattern
- Available with various offsets
- Holes accommodate #12-24 screws
- Fastening hardware NOT included

MODEL	FINISH	DESCRIPTION	QTY ⁽¹⁾
9510	Zinc plated	8 x 1 ³ / ₁₆ " (201 x 30 mm) Template reinforcement plate for 4 ¹ / ₂ " (114.3) hinge, with ³ / ₃₂ " (2.5) offset	12/120
9511	Zinc plated	8 x 1 ³ / ₁₆ " (201 x 30 mm) Template reinforcement plate for 4 ¹ / ₂ " (114.3 mm) hinge, with ¹ / ₁₆ " (1.2 mm) offset	12/120
9512	Zinc plated	8 x 1 ³ / ₁₆ " (201 x 30 mm) Template reinforcement plate for 4 ¹ / ₂ " (114.3 mm) hinge, flat, no offset	12/120

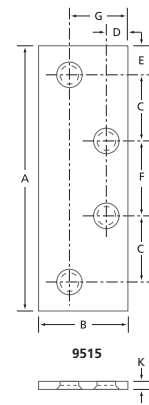
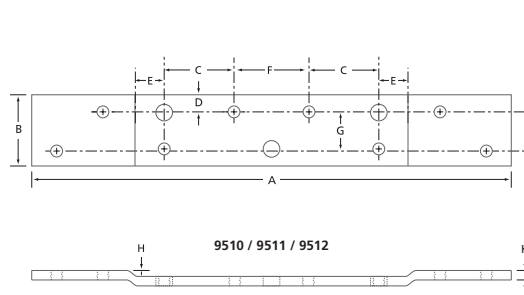
(1) 12/120 : QUANTITY PER BOX / QUANTITY PER CASE.



- Steel filler plate
- ANSI A156.7 template hole pattern
- Holes accommodate #12-24 screws
- Fastening hardware included

MODEL	FINISH	DESCRIPTION	QTY ⁽¹⁾
9515	Zinc plated	Template filler plate for 4 ¹ / ₂ x 1 ¹ / ₂ " (114.3 x 38 mm) hinge leaf	50/150

(1) 50/150 : QUANTITY PER BOX / QUANTITY PER CASE.



MODEL	A	B	C	D	E	F	G	H	K
9510	7 ¹⁵ / ₁₆ (202)	1 ³ / ₁₆ (30)	1 ¹ / ₈ (28.6)	1 ⁷ / ₆₄ (6.7)	1 ⁷ / ₃₂ (13.5)	1 ¹⁵ / ₆₄ (31)	5/8 (15)	3/32 (2.5)	5/32 (4)
9511	7 ¹⁵ / ₁₆ (202)	1 ³ / ₁₆ (30)	1 ¹ / ₈ (28.6)	1 ⁷ / ₆₄ (6.7)	1 ⁷ / ₃₂ (13.5)	1 ¹⁵ / ₆₄ (31)	5/8 (15)	1/16 (1.2)	5/32 (4)
9512	7 ¹⁵ / ₁₆ (202)	1 ³ / ₁₆ (30)	1 ¹ / ₈ (28.6)	1 ⁷ / ₆₄ (6.7)	1 ⁷ / ₃₂ (13.5)	1 ¹⁵ / ₆₄ (31)	5/8 (15)	—	5/32 (4)
9515	4 1/2 (114.3)	1 1/2 (38.1)	1 ¹ / ₈ (28.6)	3/8 (9.5)	33/64 (13.1)	1 ¹⁵ / ₆₄ (31)	1 (25.4)	—	5/32 (4)

DIMENSIONS IN INCHES (MILLIMETRES) AS PER ANSI A156.7

