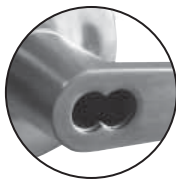


# PARAMOUNT

## G1L SERIES HEAVY-DUTY COMMERCIAL LOCKSETS

- Non-handed
- Standard backset 2 3/4" (70mm)
- Standard solid brass 6-pin tumbler cylinder Schlage "C" keyway
- Concealed mounting plate and screws
- For doors 1 9/16" (40mm) to 2" (51mm) door thickness
- Lockset has non-removable steel thru bolt mounting posts
- Stainless steel 1/2" (13mm) deadlatch bolt throw
- Standard 1 1/8" (29mm) x 2 1/4" (57mm) faceplate
- Standard ASA 1 1/4" (32mm) x 4 7/8" (124mm) strike
- Available in a variety of standard functions
- Easy installation for new construction or retrofit
- Fits ANSI A115.2, 161 door prep
- Conforms to ANSI A156.2, Grade 1
- 3 hour UL fire rating
- 5 year mechanical limited warranty



SFIC model  
available

CONFORMS TO ANSI  
**GRADE 1**



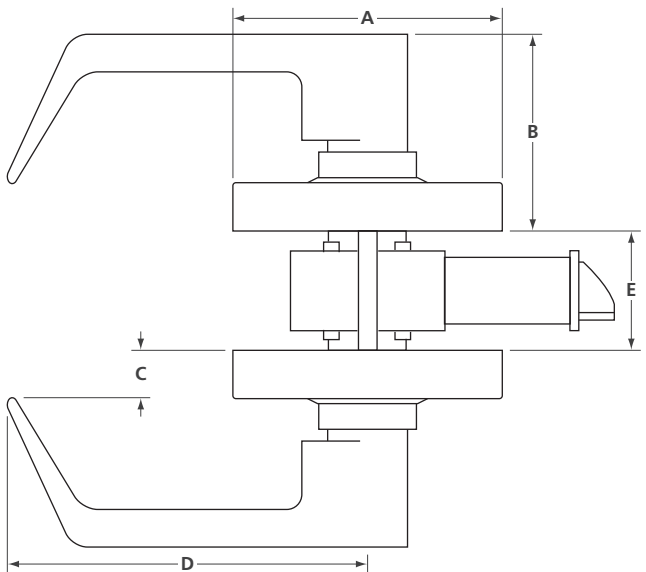
G1L series heavy-duty locksets are recommended by door hardware specialists for high traffic commercial doors. The G1L locksets are recognized for value while delivering lasting performance and security.

# G1L SERIES LOCKSETS

## SPECIFICATION

All bored lever locksets shall be G1L series. Locks shall meet the requirements of ANSI A156.2, Grade 1. G1L series lever locksets shall be adjustable for 1 9/16" (40mm) to 2" (51mm) door thickness. Locks shall fit standard 2 1/8" (55mm) cross bore (161 door prep). Latch bolt shall have standard 2 3/4" (70mm) backset, with 1/2" (13mm) latch throw and all locks shall be of heavy-duty construction and shall have a 3-hour UL listing for use on fire doors. Locks shall be non-handed and supplied with all necessary mounting fasteners.

## SIZE CHART & SELECTION GUIDE

						MODEL NUMBER	FUNCTION	FINISH	QTY PER CASE	WEIGHT LBS / KG							
<table border="1"> <thead> <tr> <th>SERIES</th> <th>A DIA</th> <th>B*</th> <th>C*</th> <th>D</th> <th>E</th> </tr> </thead> <tbody> <tr> <td>G1L</td> <td>3 9/16 (90)</td> <td>2 1/2 (67)</td> <td>1/2 (13)</td> <td>4 5/8 (117)</td> <td>1 9/16 to 2 (40 to 52)</td> </tr> </tbody> </table>	SERIES	A DIA	B*	C*	D	E	G1L	3 9/16 (90)	2 1/2 (67)	1/2 (13)	4 5/8 (117)	1 9/16 to 2 (40 to 52)	G1L 10	Passage	26D	10	53.0 / 24.0
	SERIES	A DIA	B*	C*	D	E											
	G1L	3 9/16 (90)	2 1/2 (67)	1/2 (13)	4 5/8 (117)	1 9/16 to 2 (40 to 52)											
	G1L 40	Privacy	53.0 / 24.0														
	G1L 53	Entrance	54.0 / 24.7														
	G1L 53 IC	Entrance	33.4 / 15.2														
	G1L 60 IC	Store IC, less core	29.5 / 12.8														
	G1L 70	Classroom	54.0 / 24.7														
	G1L 70 IC	Classroom	31.6 / 14.4														
G1L 80	Storeroom	53.0 / 24.0															
G1L 80 IC	Storeroom IC, less core	61.6 / 28.0															

\* Dimensions applicable for 1 3/4" (44mm) door thickness

**ORDERING EXAMPLE:**

G1L
SERIES

 | 

10
FUNCTION

 | 

-26D
FINISH

## PARTS & ACCESSORIES

STRIKE-T	T-type strike, 1 1/8" (29mm) x 2 3/4" (70mm)
ASA-T	ASA strike with adjustable tab
G1DL234	2 3/4" (70mm) backset entry deadlatch
G1SL234	2 3/4" (70mm) backset passage spring latch

STRIKE-T



ASA-T



DEADLATCH



SPRING LATCH

