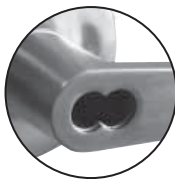


PARAMOUNT

12 SERIES COMMERCIAL LOCKSETS

- Non-handed
- For 1 3/8" (35mm) to 1 7/8" (48mm) door thickness
- Standard backset 2 3/4" (70mm); optional 2 3/8" (60mm)
- Latch with square corners faceplate
- Standard ASA strike
- Solid brass 6-pin tumbler cylinder
- Standard Schlage "C" keyway
- Rose cover conceals mounting screws
- Easy installation, fits ANSI 115.2, 161 door prep
- Wide variety of functions available
- Conforms to ANSI A156.2 series 4000, Grade 2
- 3 hour UL fire rating
- 1 year mechanical limited warranty



SFIC model available

CONFORMS TO ANSI
GRADE 2



12 series standard duty locksets are recommended by door hardware specialists for use in multi-unit housing or standard commercial applications.

12 SERIES LOCKSETS

SPECIFICATION

All bored lever locksets shall be 12 Series. Locksets shall meet ANSI A156.2 Series 4000, Grade 2 specification and ANSI A117.1 Accessibility Code requirements. The locksets shall have 3 hour fire UL rating. The lock chassis shall be made of steel and zinc construction materials with corrosion resistance protection. The latch bolt shall be made of brass chrome plated material with 1/2" (12.7mm) throw and deadlocking feature on keyed functions. The standard latch bolt backset shall be 2 3/4" (70mm) and optional 2 3/8" (60mm). The latch face plate shall be made of corrosion protected steel, 1 1/8" x 2 1/4" (28.5mm x 57.1mm) with square corners. The trim shall be made of wrought brass and bronze, with levers made of pressure die cast zinc, plated to the required finish. The cylinder shall be solid brass with 6-pin tumbler and a standard Schlage "C" keyway. **OPTIONAL:** finishes, latches, keyways, keying, backsets and strikes.

SIZE CHART & SELECTION GUIDE

						MODEL NUMBER	FUNCTION	FINISH	QTY PER CASE	WEIGHT LBS / KG	
						12-L00	Dummy	3, 26D	20	33.2 / 15.1	
						12-L10	Passage			43.4 / 19.7	
						12-L40	Privacy			44.8 / 20.3	
						12-L53	Entrance	3, 26D	20	46.2 / 21.0	
						12-L53 IC	Entrance, less cylinder			27.0 / 12.3	
						12-L53C	Entrance, with clutch	3, 26D	20	44.2 / 20.1	
						12-L53C-3					
						12-L70	Classroom	3, 26D	10	45.8 / 20.8	
						12-L70 IC	Classroom, less cylinder	26D		27.0 / 12.3	
						12-L70C	Classroom, with clutch	3, 26D		44.0 / 20.0	
						12-L72*	Communication			45.0 / 20.5	
						12-L72C*	Communication, with clutch			41.0 / 18.6	
						12-L80	Storeroom	3, 26D		20	40.8 / 18.5
						12-L80 IC	Storeroom, less cylinder				26D
						12-L80C	Storeroom, with clutch	3, 26D		20	38.8 / 17.6
						12-L82*	Institution or utility				42.8 / 19.5
12-L89	Exit	3, 26D	20	27.0 / 12.3							

SERIES	A	B	C	D	E
12-L	3 11/32 (85.0)	2 7/8 (72.8)	5/8 (15.5)	5 5/32 (130.8)	1 3/8 to 1 7/8 (35 to 48)

ORDERING EXAMPLE: 12-L / 53 / C / -26D
SERIES FUNCTION OPTION FINISH

PARTS & ACCESSORIES

STRIKE-T	T-type strike, 1 1/8" (29mm) x 2 3/4" (70mm)	SL234	2 3/4" (70mm) passage latch
ASA-T	ASA strike with adjustable tab	EXT5	Latch extension for 5" (127mm) backset
DL238	2 3/8" (60mm) deadlatch		
DL234	2 3/4" (70mm) deadlatch		
SL238	2 3/8" (60mm) passage latch		

