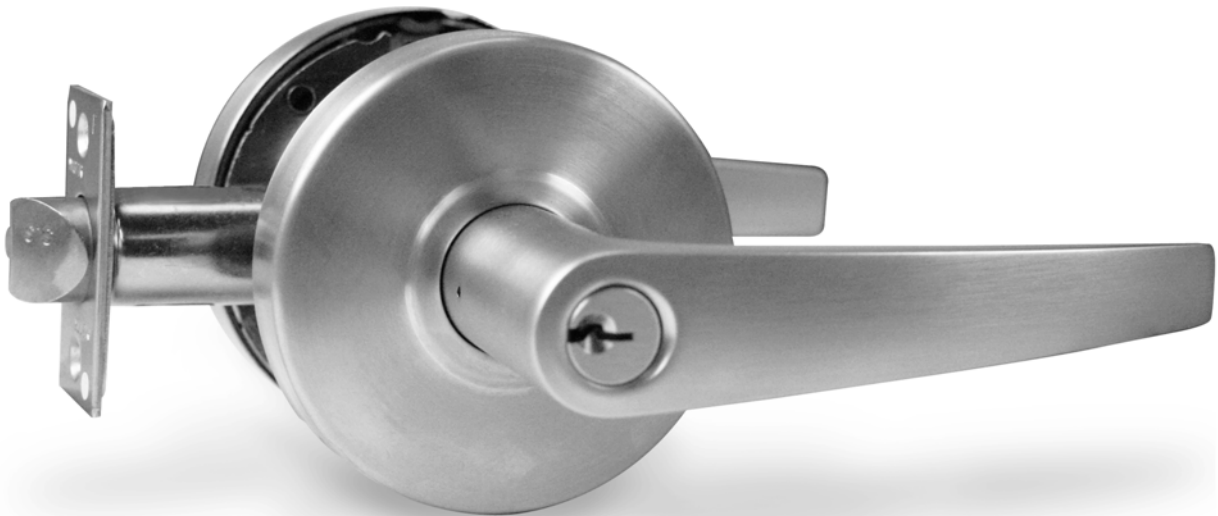


PARAMOUNT

S SERIES COMMERCIAL LOCKSETS

- Non-handed
 - For 1 3/8" (35mm) to 1 7/8" (48mm) door thickness
 - Standard backset 2 3/4" (70mm); optional 2 3/8" (60mm)
 - Latch with square corners faceplate
 - Standard ASA strike
 - Solid brass 6-pin tumbler cylinder
 - Standard Schlage "C" keyway
 - Rose cover conceals mounting screws
 - Easy installation, fits ANSI 115.2, 161 door prep
 - Wide variety of functions available
 - Conforms to ANSI A156.2 series 4000, Grade 2
 - 3 hour UL fire rating
 - 1 year mechanical limited warranty
-



CONFORMS TO ANSI
GRADE 2



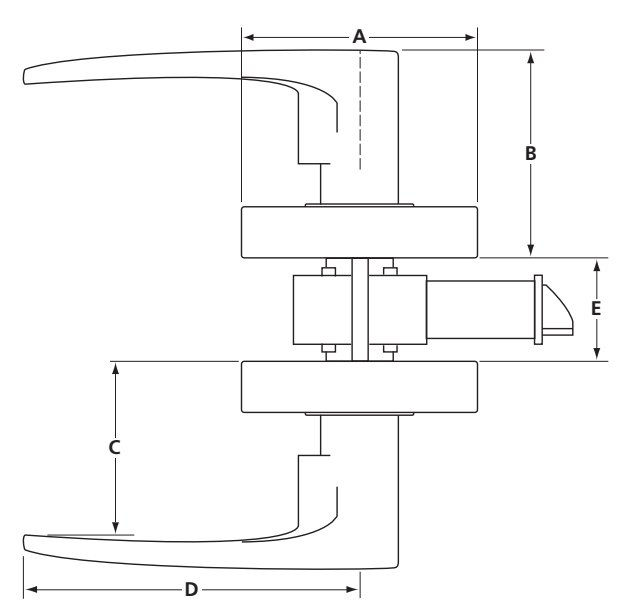
S series standard duty locksets are recommended by door hardware specialists for use in multi-unit housing or standard commercial applications.

S SERIES LOCKSETS

SPECIFICATION

All bored lever locksets shall be S series. Locksets shall meet ANSI A156.2 series 4000, Grade 2 specification and ANSI A117.1 Accessibility Code requirements. The locksets shall have 3 hour UL fire rating. The lock chassis shall be made of steel and zinc construction materials with corrosion resistance protection. The latch bolt shall be made of brass chrome plated material with 1/2" (12.7mm) throw and deadlocking feature on keyed functions. The standard latch bolt backset shall be 2 3/4" (70mm) and optional 2 3/8" (60mm). The latch face plate shall be made of corrosion protected steel, 1 1/8" x 2 1/4" (28.5mm x 57.1mm) with square corners. The trim shall be made of wrought brass and bronze, with levers made of pressure die-cast zinc, plated to the required finish. The cylinder shall be solid brass with 6-pin tumbler and a standard Schlage "C" keyway. **OPTIONAL:** latches, cylinders, keyways, keying, backsets and strikes.

SIZE CHART & SELECTION GUIDE

						MODEL NUMBER	FUNCTION	FINISH	QTY PER CASE	WEIGHT LBS / KG							
<table border="1"> <thead> <tr> <th>SERIES</th> <th>A</th> <th>B</th> <th>C</th> <th>D</th> <th>E</th> </tr> </thead> <tbody> <tr> <td>S</td> <td>3 3/8 (86)</td> <td>2 5/8 (67)</td> <td>2 (51)</td> <td>4 1/2 (114)</td> <td>1 3/8 to 2 (35 to 51)</td> </tr> </tbody> </table>	SERIES	A	B	C	D	E	S	3 3/8 (86)	2 5/8 (67)	2 (51)	4 1/2 (114)	1 3/8 to 2 (35 to 51)	S00	Dummy	26D	20	33.2 / 15.1
	SERIES	A	B	C	D	E											
	S	3 3/8 (86)	2 5/8 (67)	2 (51)	4 1/2 (114)	1 3/8 to 2 (35 to 51)											
	S10	Passage	10	43.4 / 19.7													
	S40	Privacy	10	44.8 / 20.3													
	S53	Entrance	10	46.2 / 21.0													
	S70	Classroom	10	45.8 / 20.8													
S80	Storeroom	10	45.0 / 20.5														

ORDERING EXAMPLE: S | 53 | -26D
SERIES FUNCTION FINISH

PARTS & ACCESSORIES

ASA-T	ASA strike with adjustable tab	TL004	2 3/4 (70mm) deadlatch
STRIKE-T	T-type strike, 1 1/8" (29mm) x 2 3/4" (70mm)	TL005	2 3/8 (60mm) deadlatch
TL001	2 3/8 (60mm) passage spring latch	TL006	5 (127mm) deadlatch
TL002	2 3/4 (70mm) privacy spring latch	TL010	2 3/8 (60mm) privacy spring latch
TL003	2 3/4 (70mm) passage spring latch	TL014	Adapter for 2 3/4 (70mm) latches - extends to 5 (127mm)

