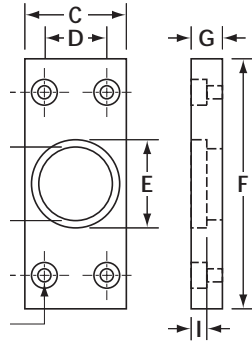


SECURE FAST LOCK GUARD



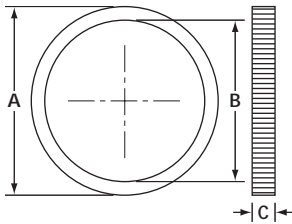
- Heavy aluminum plate
- Attaches to metal door with 4 steel 3/16" (4.8mm) pop rivets included
- 1/4" (6.4mm) cylinder recess
- Finish: aluminum (AL)

MODEL NUMBER	A	B	C	D	E	F	G	H DIA	I	QTY PER CASE	WEIGHT LBS / KG
5510	3 (76)	1 3/16 (30.1)	1 5/8 (41.4)	1 (25.4)	1 13/32 (36.0)	4 (102)	1/2 (12.8)	13/32 (10.5)	1/4 (6.0)	20	5.8 / 2.6

ORDERING EXAMPLE:

5510
SERIES | **-AL**
FINISH

MORTISE CYLINDER RING NUT



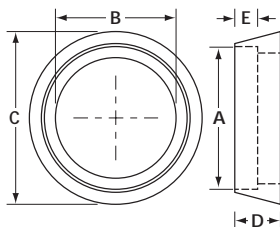
- Solid brass locking ring nut for 1 5/32" (29mm) mortise cylinder

MODEL NUMBER	MATERIAL	A	B	C	QTY PER CASE	WEIGHT LBS / KG
2315-2	Brass	1 5/16 (33.5)	1 1/8 (28.6)	5/32 (4.1)	100	1.6 / 0.7

ORDERING EXAMPLE:

2315-2
SERIES | **-**
FINISH

CYLINDER TRIM RING AND GUARD



- 1 5/32" (29.4 mm) cylinder diameter
- 817 & 818 are hardened steel security cylinder trim rings

MODEL NUMBER	MATERIAL	A	B	C	QTY PER CASE	WEIGHT LBS / KG
817S	Steel	1 13/32 (36)	1 3/16 (30.0)	1 11/16 (42.9)	50	4.8 / 2.2
820S	Stainless steel	N/A	1 5/32 (29.3)	1 3/8 (35)	500	0.6 / .03

ORDERING EXAMPLE:

817S
SERIES | **-**
FINISH